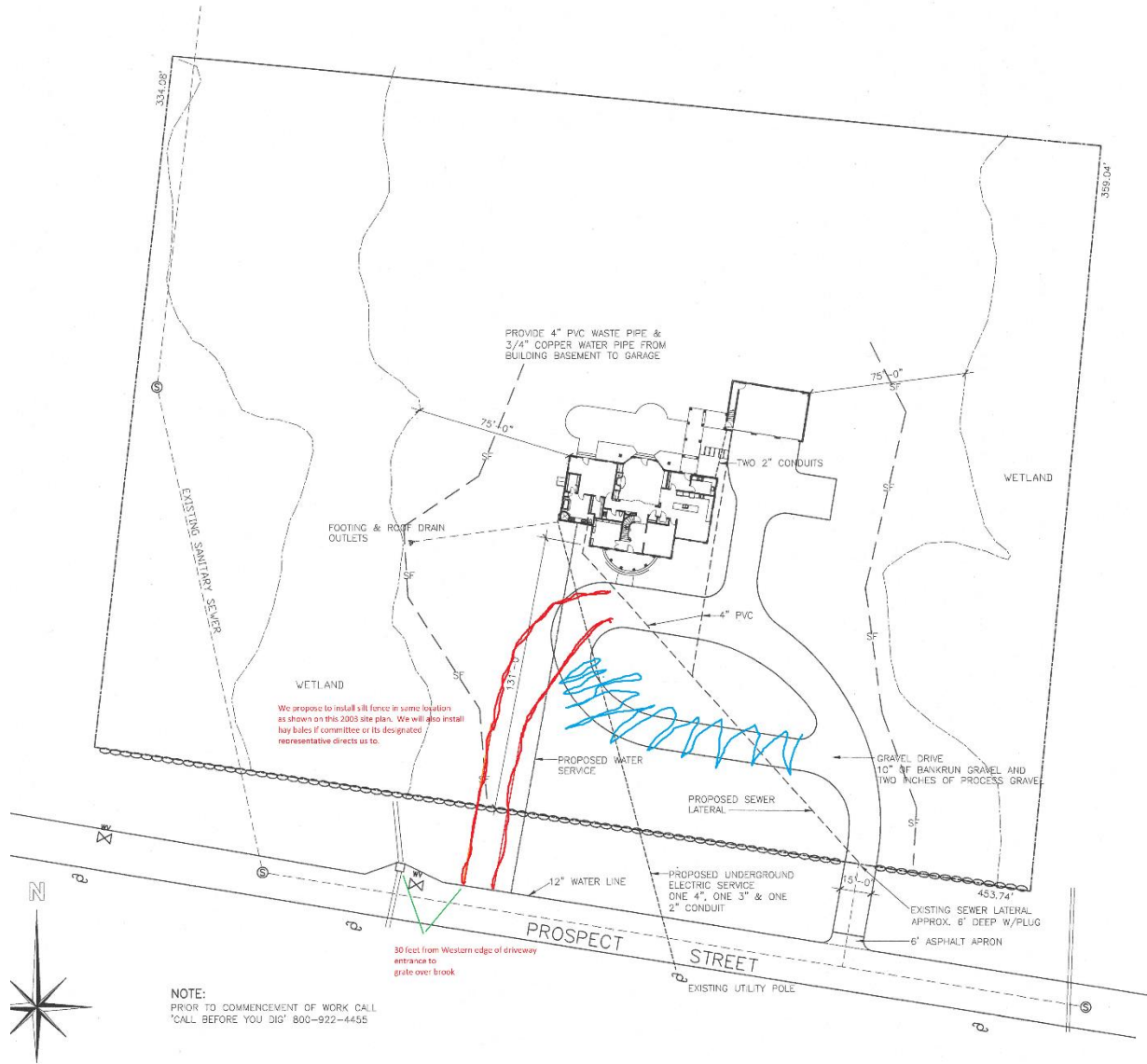


Rough sketch of location of new section of driveway (in red) and portion of driveway to be removed (blue). Please note the underlying site plan is from plans provided by previous homeowner. We believe the site plan is a generally accurate representation of what was built but it should not be considered "as built".



View from across street. Stakes for proposed driveway visible at edge of street. Grate over brook is approximately 5 feet to left of fire hydrant.



Broad view from across street. Stakes for proposed driveway visible at far edge of street



View from across street looking East. Stakes for proposed driveway entrance visible at far edge of street. Granite stone visible to left of fire hydrant is over culvert for brook.



View from outside of stone wall towards house



View from East to West. Stakes for proposed driveway entrance visible at edge of street.



Driveway at front of house. Stakes visible in background marking location of new portion of driveway



Current driveway entrance to East of proposed driveway entrance. This driveway entrance will remain





Portion of driveway in foreground and to left will be removed. Soil will be installed and seeded.



View from house towards street. Stakes marking lefthand side of new portion of driveway visible in foreground.

