

RECEIVED
FEB 09 2021

BY: PZ CON-ESP
2/16/21

KENNETH C. BALDWIN

280 Trumbull Street
Hartford, CT 06103-3597
Main (860) 275-8200
Fax (860) 275-8299
kbaldwin@rc.com
Direct (860) 275-8345

Also admitted in Massachusetts
and New York

February 2, 2021

Via Certificate of Mailing

Carol Bramley, Chair
Planning & Zoning Commission
Town of Litchfield
P.O. Box 12
80 Doyle Road
Bantam, CT 06750

Re: **SR Litchfield, LLC – Notice of Intent to File a Petition for Declaratory Ruling for the Construction, Operation, and Maintenance of a 19.8 MW(ac) Solar Photovoltaic Electric Generating Facility off of Town Farm Road in Litchfield and Rossi Road and Highland Avenue in Torrington, Connecticut**

Notice to State and Local Government Officials

Dear Chairman Bramley:

Pursuant to the provisions of §16-50j-40(a) of the Regulations of Connecticut State Agencies, this letter serves as notice that SR Litchfield, LLC intends to file a Petition for Declaratory Ruling (“Petition”) with the Connecticut Siting Council (“Council”) on or about February 5, 2021, seeking approval of the construction, operation, and maintenance of a 19.8 megawatt (“MW”)(ac) solar generating facility, including all associated equipment, related site improvements, and interconnection (the “Project”).

The Project would be located on portions of six (6) separate parcels in the northern portion of the Towns of Litchfield and the southwest portion of the City of Torrington, Connecticut, totaling approximately 212 acres. Each of the parcels are owned by the Silicon Ranch Corporation. The Project would consist of the installation of ground-mounted photovoltaic panels, centralized inverters and transformers, electrical lines, an electric transformer, a station controller, a

Robinson+Cole

February 2, 2021

Page 2

perimeter fence, and interior access roads. For additional detail regarding the location of the Property and the layout of site improvements, please see the attached Project Plan.

Pursuant to the provisions of Connecticut General Statutes § 16-50g *et seq.*, the location of certain Project features may change as this Petition proceeds through the Council's regulatory review process.

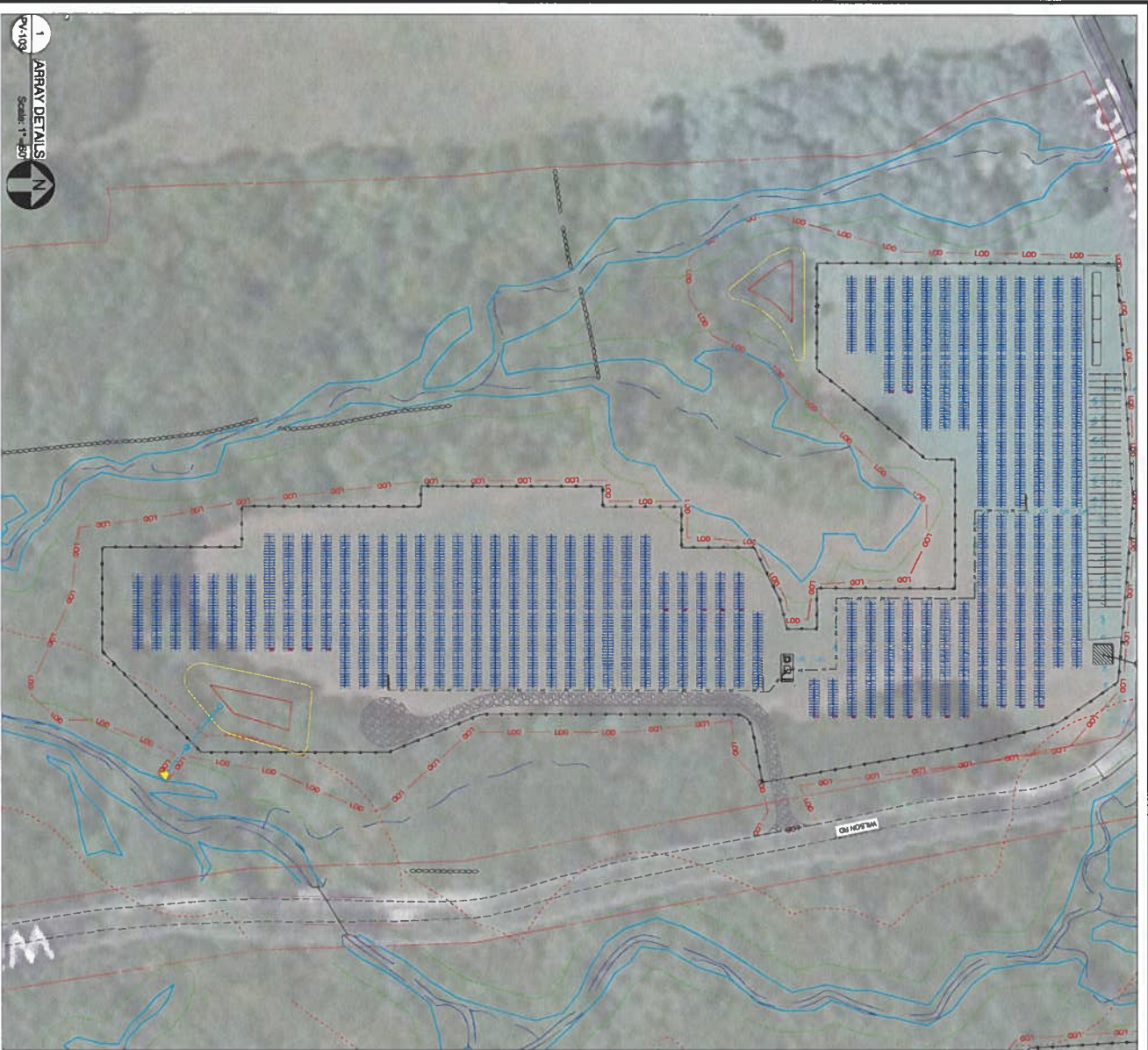
If you have any questions, please feel free to contact me. My contact information is provided above. You may also contact the Council directly at 860-827-2935.

Respectfully,

A handwritten signature in black ink, appearing to read "Kenneth C. Baldwin", with a long horizontal flourish extending to the right.

Kenneth C. Baldwin, Esq.

KCB/kmd
Attachment (Project Plan)



1
PV-103
ARRAY DETAILS
Scale: 1"=50'

LEGEND	
	20' x 27' Landed PV Array 450W 600V TILT
	20' x 14' Landed PV Array 450W 600V TILT
	EQUIPMENT RACK TYPE OF 8' SINGLE ROW 11' SPACINGS
	EQUIPMENT RACK WITH 1 STRING INVERTERS TYPE OF 8'
	EQUIPMENT RACK WITH 2 STRING INVERTERS TYPE OF 3 LOCATIONS
	EQUIPMENT RACK WITH 4 STRING INVERTERS TYPE OF 9 LOCATIONS
	WETLANDS
	UNDEVELOPED AC CREEK
	UNDEVELOPED REGULAR 100' FLOOD CANAL
	OVERHEAD ELECTRICAL LINES
	REGULATOR FENCE LINE
	UTILITY OF DISTURBANCE
	STORMWATER BASIN
	18FT ACCESS ROADS
	12FT ACCESS ROADS
	TEMPORARY CONSTRUCTION AREA (TO BE RESTORED FOLLOWING COMPLETION OF CONSTRUCTION)
	20' VERTICAL BUFFER
	100' OUTER PERIMETER BUFFER
	LANDCLEARING

SOLVIDA
DESIGN + ENGINEERING
1044 Kohn Avenue, Berkeley, California 94702

SILICON RANCH

LITCHFIELD SOLAR

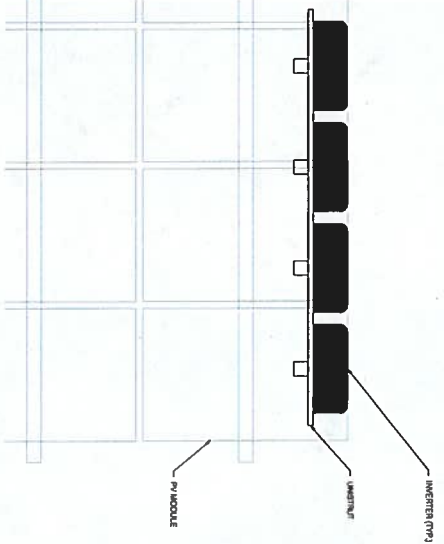
2-298 ROSSI RD
TORRINGTON, CT 06790, USA
LAT: 41.794157°N
LON: 73.166028°W

REV. NO.	DESCRIPTION	DATE
0	PRELIMINARY	01/29/21

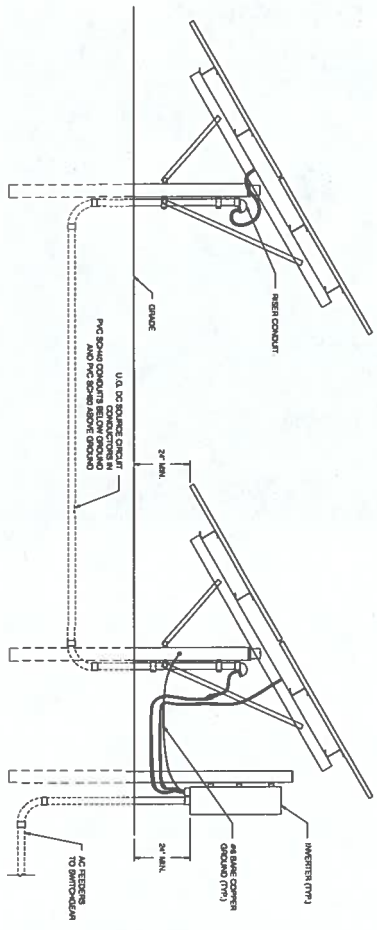
PROJECT NO.: PV-103
PROJECT SITE: 2021-01-29-21
DRAWN BY: [Name]
CHECKED BY: [Name]
DATE: 01/29/21

ARRAY DETAILS

PV-103

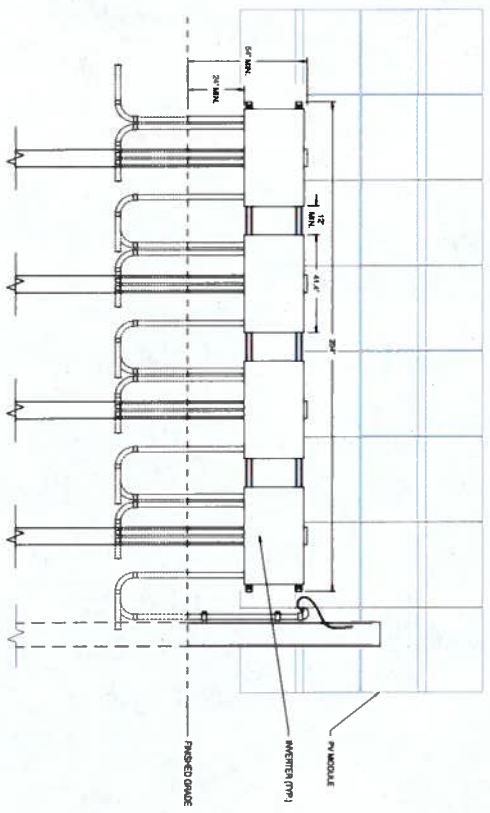


1 INVERTER MOUNTING (PLAN VIEW)
PV-105



2 INVERTER ELEVATION (SIDE VIEW) AND DC SOURCE CIRCUIT (JUMPER) TRENCH DETAIL
PV-105

Scale: NTS



3 INVERTER ELEVATION (FRONT VIEW)
PV-105

Scale: NTS

SOLVIDA
DESIGN • ENGINEERING
1641 Kohn Avenue, Berkeley, California 94702



LITCHFIELD
SOLAR

2-298 ROSSI RD
TORRINGTON, CT 06790, USA
LAT: 41.794157°N
LON: 73.168028°W

REV. NO	DESCRIPTION	DATE
0	PRELIMINARY	01/28/21

SHEET TITLE: INVERTER ELEVATION DETAILS

PROJECT NO.	PROJECT NAME	DATE
DRAWN BY	CHECKED BY	SCALE
DRAWING NO.	AS SHOWN	

PV-105

LR4-72HBD 425~455M

**High Efficiency
Low LID Bifacial PERC with
Half-cut Technology**

0.45%

PERC Loss

84.95%

Efficiency

Key Features:

- High efficiency PERC technology
- Low LID (Light Induced Degradation)
- Half-cut technology for reduced power loss
- Robust design for long-term performance

LONGi

From the "Silicon Valley" of the solar industry, LONGi Solar is a leading manufacturer of high-efficiency solar panels. Our LR4-72HBD 425~455M panels are designed for maximum energy production and long-term reliability. With a half-cut design and bifacial PERC technology, these panels offer superior performance in a variety of conditions.

Key Specifications:

- Power: 425-455W
- Dimensions: 1780mm x 1039mm x 35mm
- Weight: 21.5kg
- Temperature Coefficient: -0.45%/°C

LR4-72HBD 425~455M

**High Efficiency
Low LID Bifacial PERC with
Half-cut Technology**

Key Features:

- High efficiency PERC technology
- Low LID (Light Induced Degradation)
- Half-cut technology for reduced power loss
- Robust design for long-term performance

LONGi

From the "Silicon Valley" of the solar industry, LONGi Solar is a leading manufacturer of high-efficiency solar panels. Our LR4-72HBD 425~455M panels are designed for maximum energy production and long-term reliability. With a half-cut design and bifacial PERC technology, these panels offer superior performance in a variety of conditions.

Key Specifications:

- Power: 425-455W
- Dimensions: 1780mm x 1039mm x 35mm
- Weight: 21.5kg
- Temperature Coefficient: -0.45%/°C

SQ250HX-US New

Multi-MPPT String Inverter for **MONO** VIL System

MAXIMUM POWER TRACKING

- MPPT Efficiency: 99.78%
- MPPT Voltage Range: 50V-850V
- MPPT Current Range: 10A-25A

SAFETY

- DC Voltage Protection: 150V
- DC Current Protection: 15A
- Overcurrent Protection: 150%

Key Features:

- High efficiency MPPT
- Advanced safety features
- Robust design for outdoor use

SQ250HX-US

Parameter	Value
Power	2500W
Dimensions	480mm x 250mm x 70mm
Weight	4.5kg
MPPT Efficiency	99.78%
MPPT Voltage Range	50V-850V
MPPT Current Range	10A-25A
DC Voltage Protection	150V
DC Current Protection	15A
Overcurrent Protection	150%

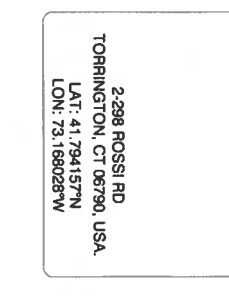
EQUIPMENT SPECIFICATIONS

REV.	DATE	DESCRIPTION
0	01/28/21	PRELIMINARY

PV-106

LITCHFIELD SOLAR

2-298 ROSSI RD
TORRINGTON, CT 06790, USA
LAT: 41.794157°N
LON: 73.168028°W



SOLVIDA
DESIGN • ENGINEERING

1641 Kohn Avenue, Berkeley, California 94702

