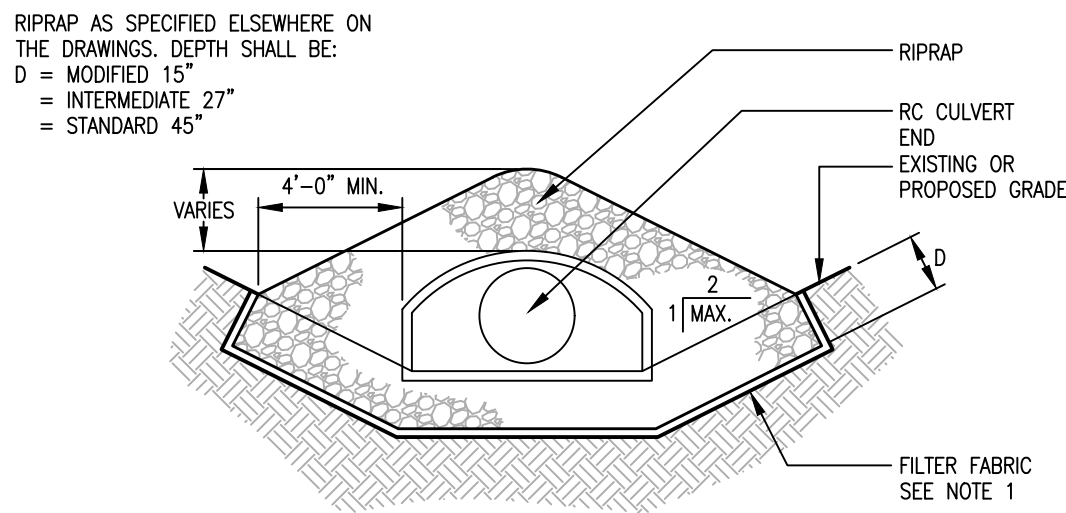
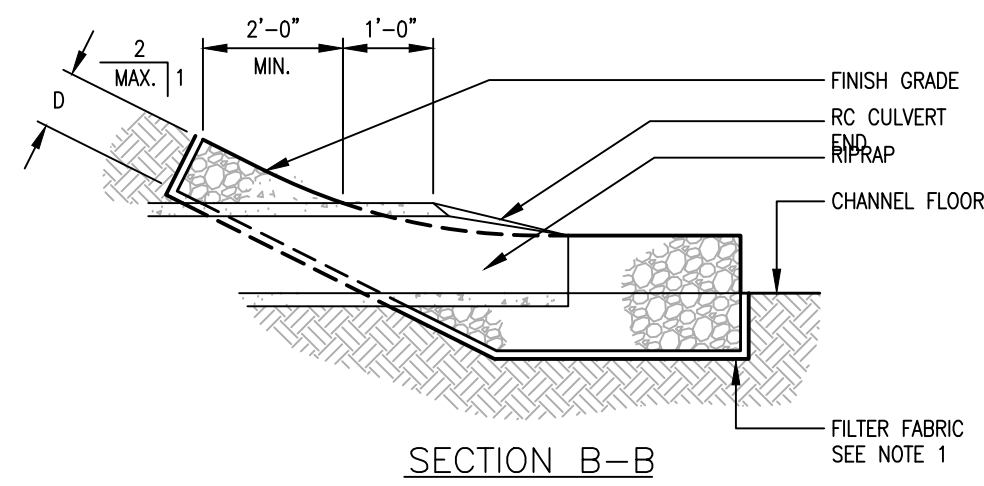


2 UTIL 122 TYPICAL HYDRANT AND GATE VALVE DETAIL N.T.S.

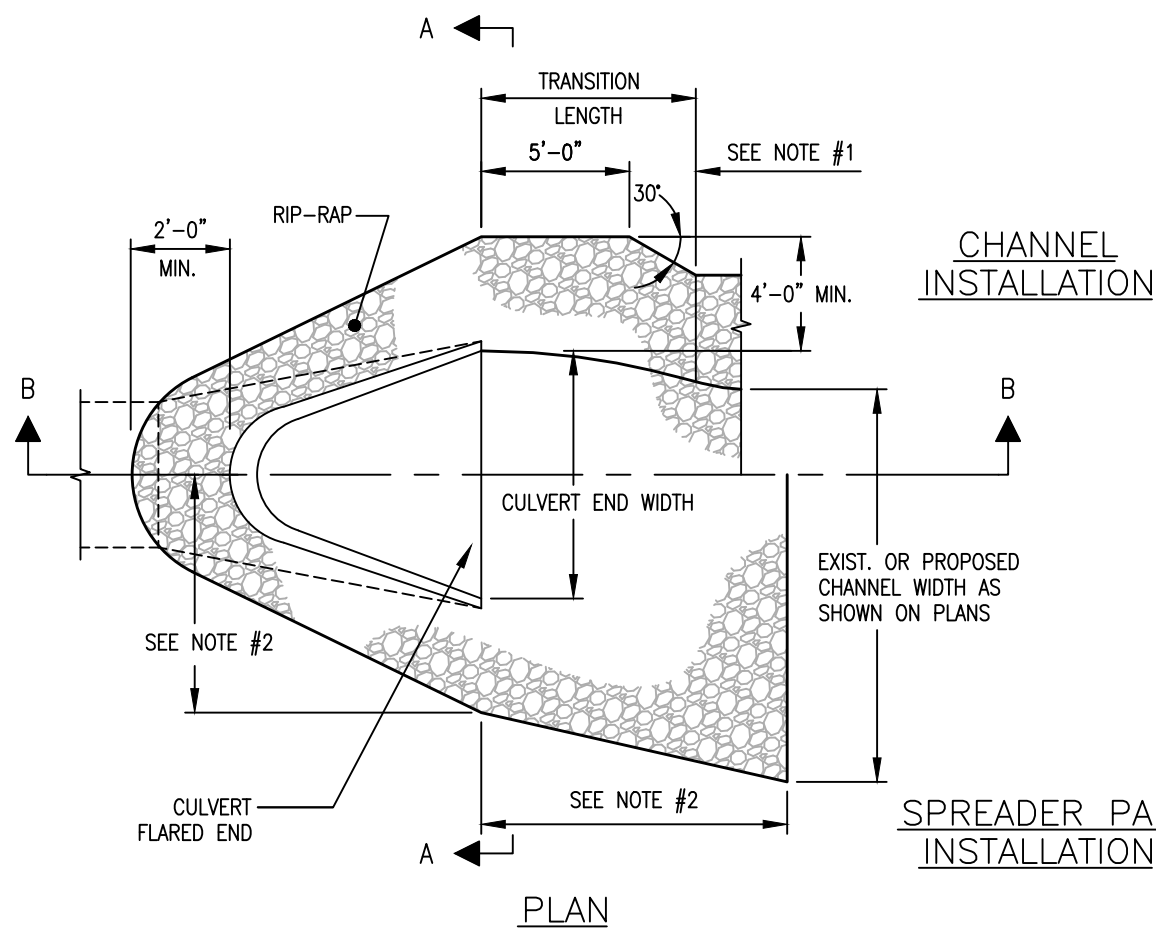
- NOTES:
1. TAPER TRANSITION FOR CHANNEL INSTALLATIONS AS REQUIRED TO MATCH CHANNEL WIDTH, OR AS INDICATED ON THE PLANS.
  2. ALL TOTAL WIDTHS AND LENGTHS FOR SPREADER PAD INSTALLATIONS ARE AS INDICATED ON PLANS.
  3. FILTER FABRIC SHALL BE A WOVEN MONOFILAMENT FABRIC AS MANUFACTURED BY MIRAFI FABRIC 600X OR AMOCO FABRICS CO PROPER 1325.



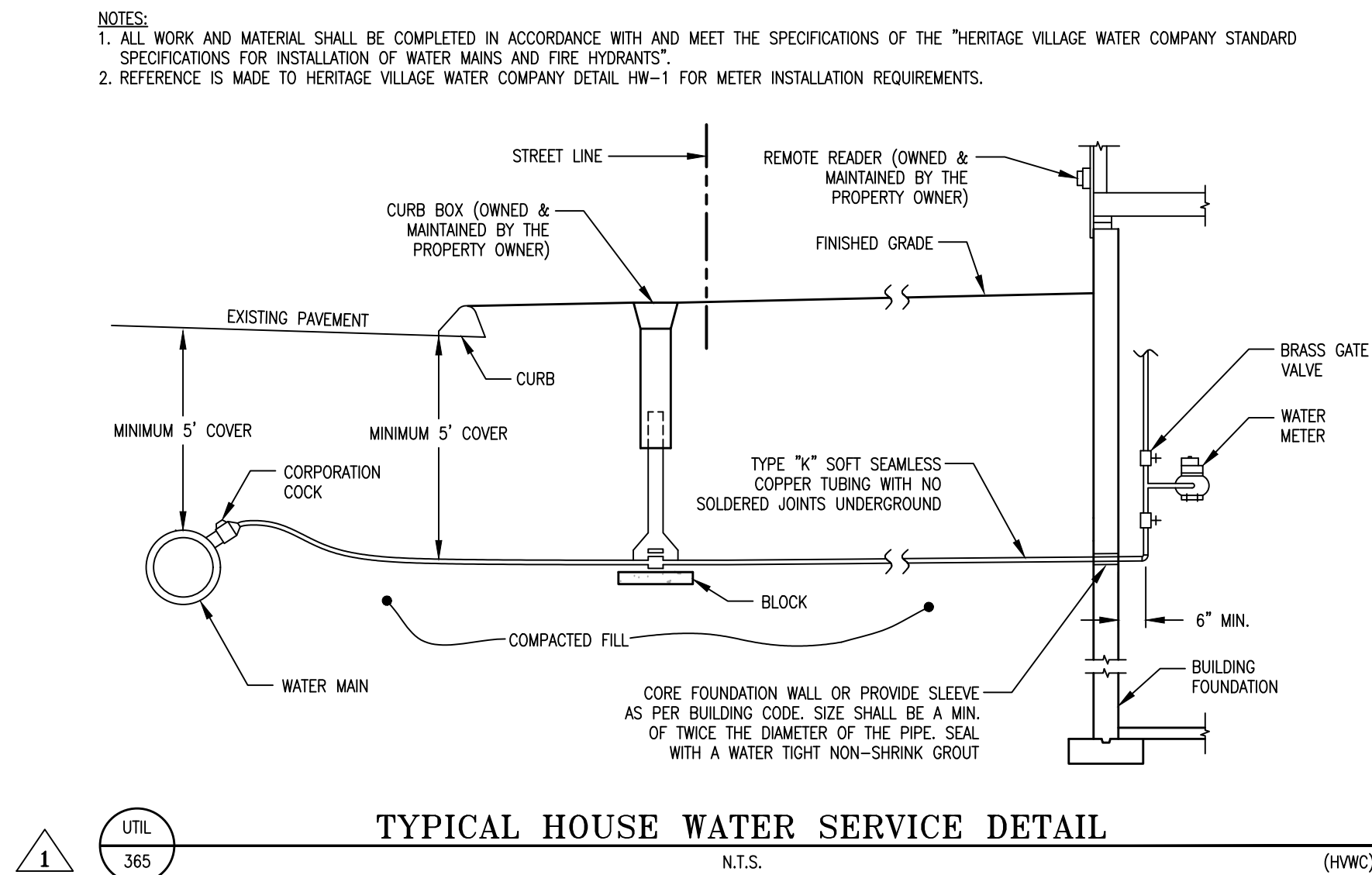
SECTION A-A



SECTION B-B

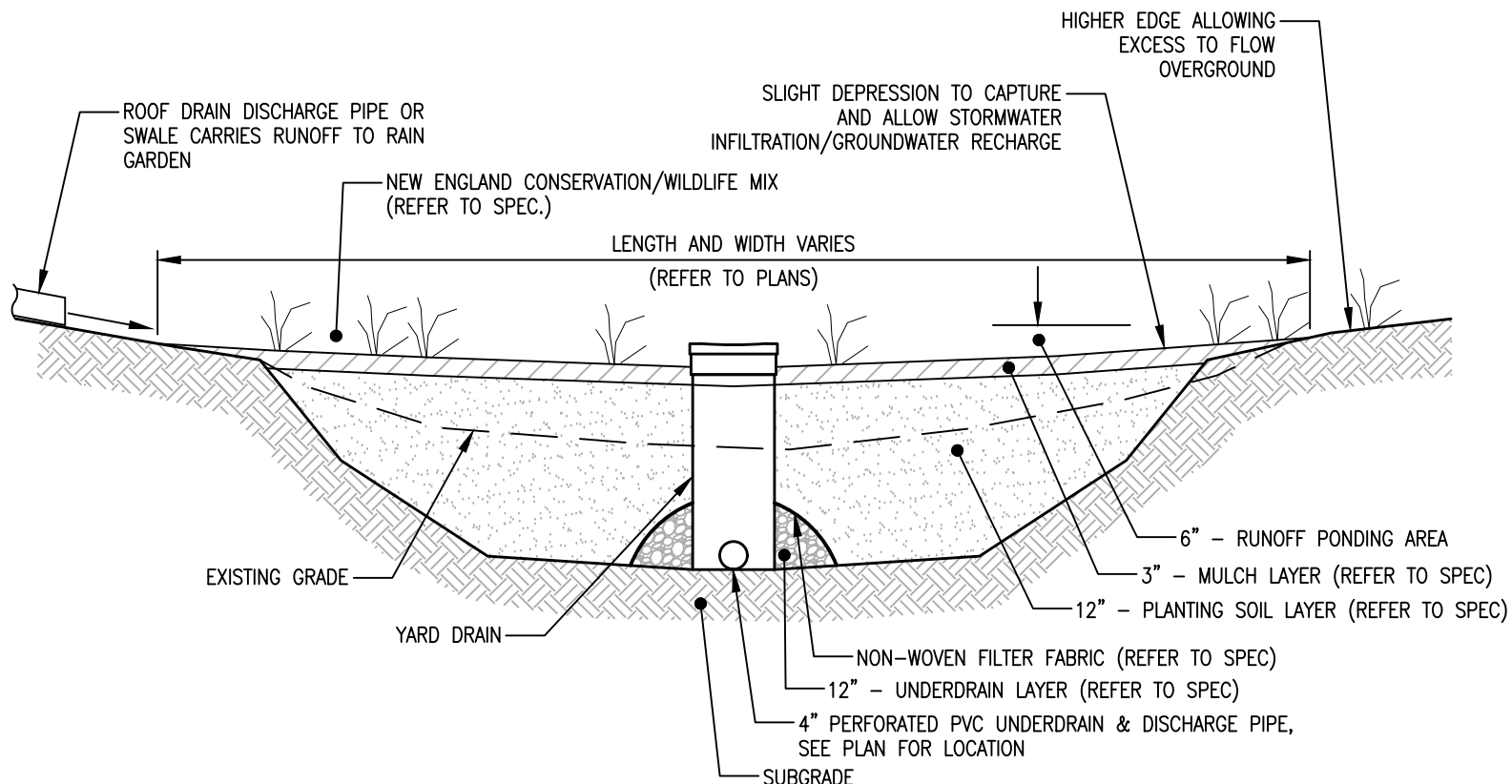


STRM 004 RIPRAP SPLASHPAD DETAIL N.T.S.



1 UTIL 365 TYPICAL HOUSE WATER SERVICE DETAIL N.T.S. (HWC)

- NOTES:
1. THE CONTRACTOR SHALL NOTIFY THE ENGINEER PRIOR TO THE START OF CONSTRUCTION/INSTALLATION OF RAIN GARDEN MATERIALS.
  2. GRADE SURFACE OF INSTALLATION AREA SO THAT EARTH IS CLEAN OF ALL ROOTS AND OBSTRUCTIONS. SCARIFY SUBSOIL PRIOR TO INSTALLATION OF RAIN GARDEN MATERIALS.
  3. ALL RAIN GARDEN MATERIALS SHALL BE APPROVED BY THE ENGINEER PRIOR TO CONSTRUCTION AND SHALL CONFORM TO THE FOLLOWING SPECIFICATIONS:
    - MULCH LAYER - SHALL BE A SHREDDED HARDWOOD ONLY.
    - PLANTING SOIL LAYER - SHALL BE A SCREENED TOPSOIL MIXED WITH CLEAN SAND. SAND SHALL MEET ASTM C-33 WITH GRAIN SIZE OF 0.02-0.04".
    - NON-WOVEN FILTER FABRIC - SHALL BE 160Z WITH A MINIMUM PUNCTURE STRENGTH OF 95 LBS. AS MANUFACTURED BY MIRAFI INC. OR APPROVED EQUAL.
    - UNDERDRAIN LAYER - SHALL BE 1-1/4" - 1-1/2" WASHED STONE.
  4. SURFACE PLANTING SEED MIXTURE SHALL BE NEW ENGLAND CONSERVATION/WILDLIFE MIX. BY NEW ENGLAND WETLAND PLANTS, INC. OR APPROVED EQUAL. APPLICATION RATE: 1 LB/1,750 SF.



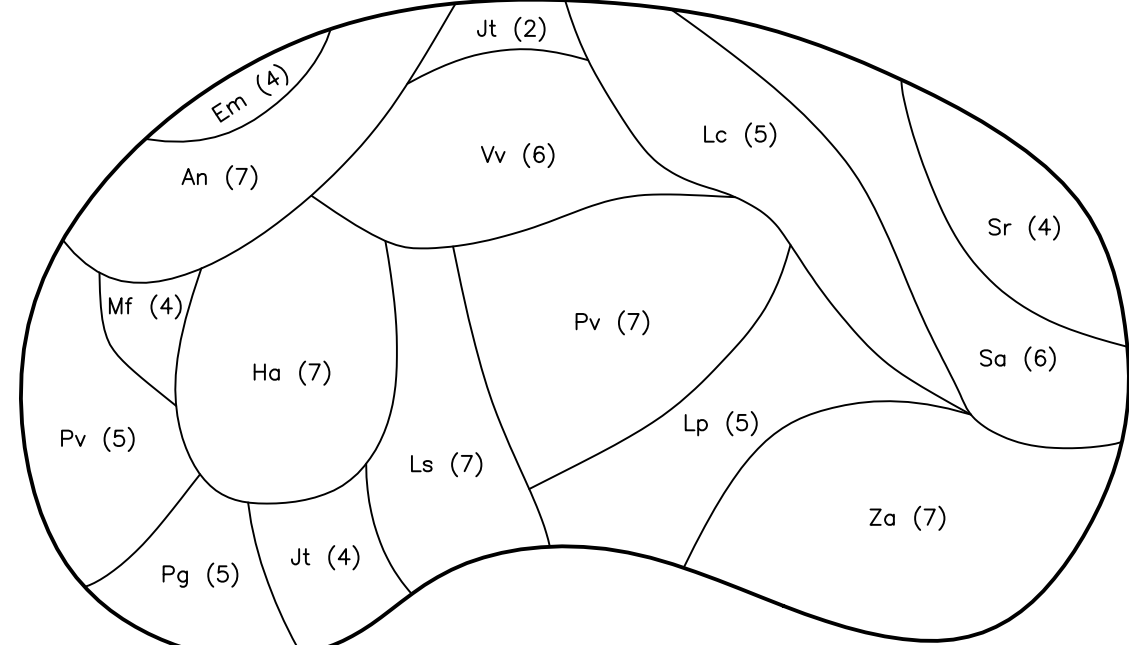
STRM 329B TYPE 'A' RAIN GARDEN DETAIL IN A SUMP CONDITION N.T.S.

- NOTES:
1. PATTERN AND SHAPE CAN VARY TO SUIT SITE CONDITIONS AND PLANT AVAILABILITY.

PLANTING LIST FOR RAIN GARDEN IN WELL DRAINED TO SANDY SOILS

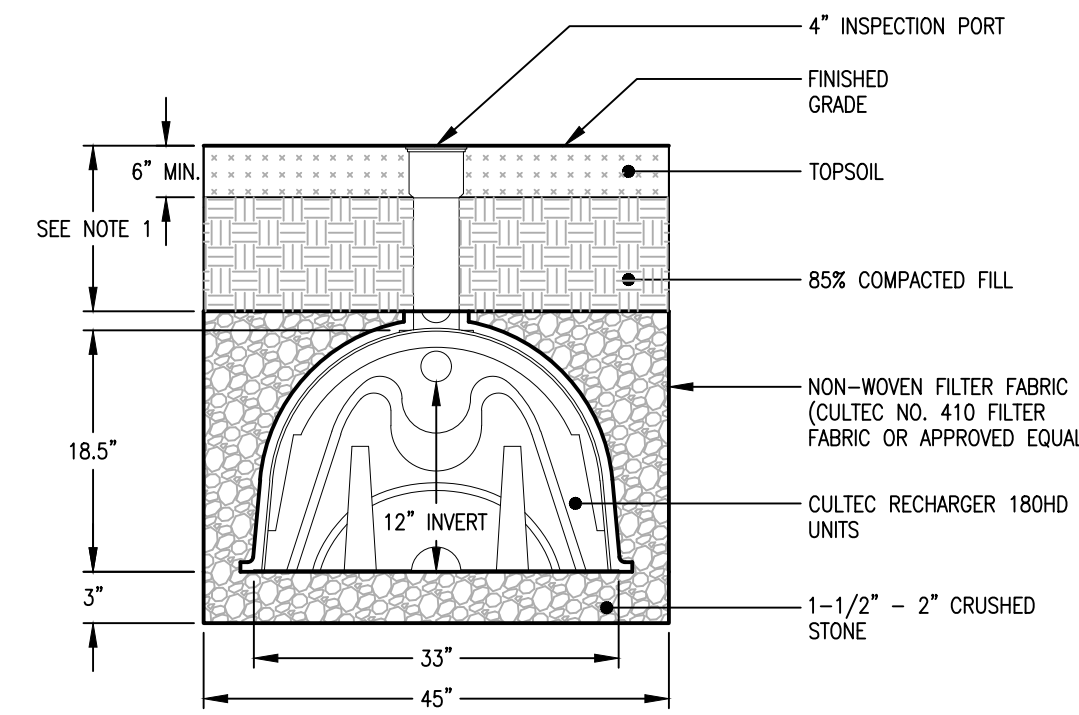
SYMBOL	COMMON NAME	SPECIES NAME	NUMBER OF PLANTS
An	New England Aster	Aster novae-angliae	7
Em	Spotted Joe-Pye weed	Eupatorium maculatum	4
Ha	Sneezeweed	Helenium autumnale	7
Jt	Torrey's rush	Juncus torreyi	6
Lp	Prairie blazing star	Liatris pycnostachya	5
Lc	Cardinal flower	Loebelia cardinalis	5
Ls	Great blue lobelia	Loebelia siphilitica	7
Mf	Wild bergamot	Monarda fistulosa	4
Pg	Marsh phlox	Phlox glaberrima	5
Pv	Mountain Mint	Pycnanthemum virginianum	12
Sa	Green bullrush	Scirpus atrovirens	6
Sr	Stiff goldenrod	Solidago rigida	4
Vv	Culver's root	Veronicastrum virginicum	6
Za	Golden Alexander	Zizia aurea	7

TOTAL AREA = 85 SQ. FT.



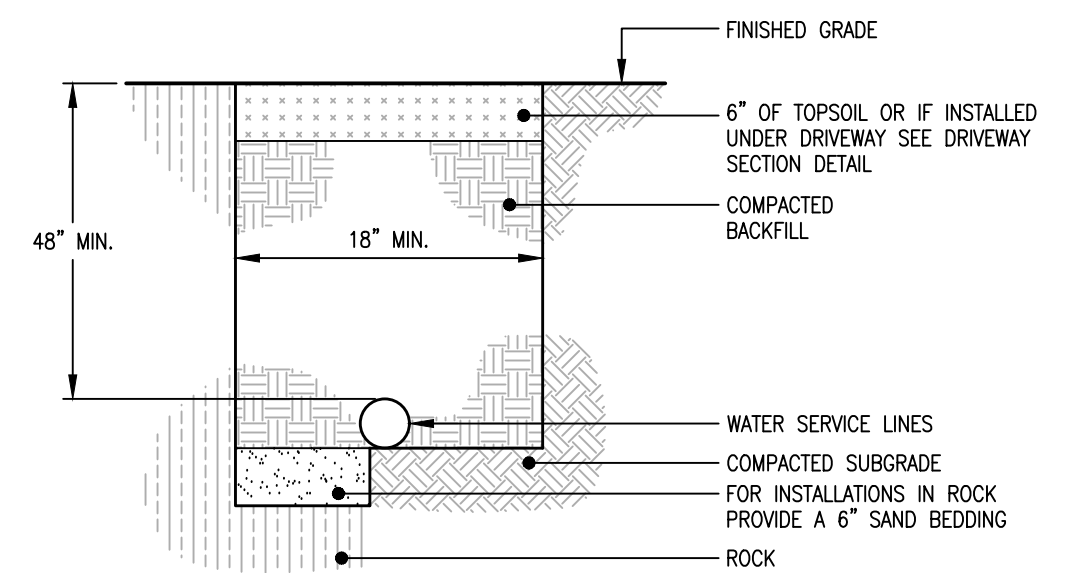
STRM 317A TYPICAL RAIN GARDEN PLANTING DETAIL N.T.S.

- NOTES:
1. MINIMUM 9" OF COVER TO MEET H-10 LOADING, AND 18" OF COVER TO MEET H-20 LOADING.
  2. PROVIDE A MINIMUM ONE CLEANOUT MANHOLE PER TRENCH IN ALL PAVED AREAS (SEE DETAIL); A MANHOLE EXTENSION IS REQUIRED IN GRASSED AREAS WHEN FINISHED GRADE IS GREATER THAN 2'-0" FROM TOP OF GALLEY.



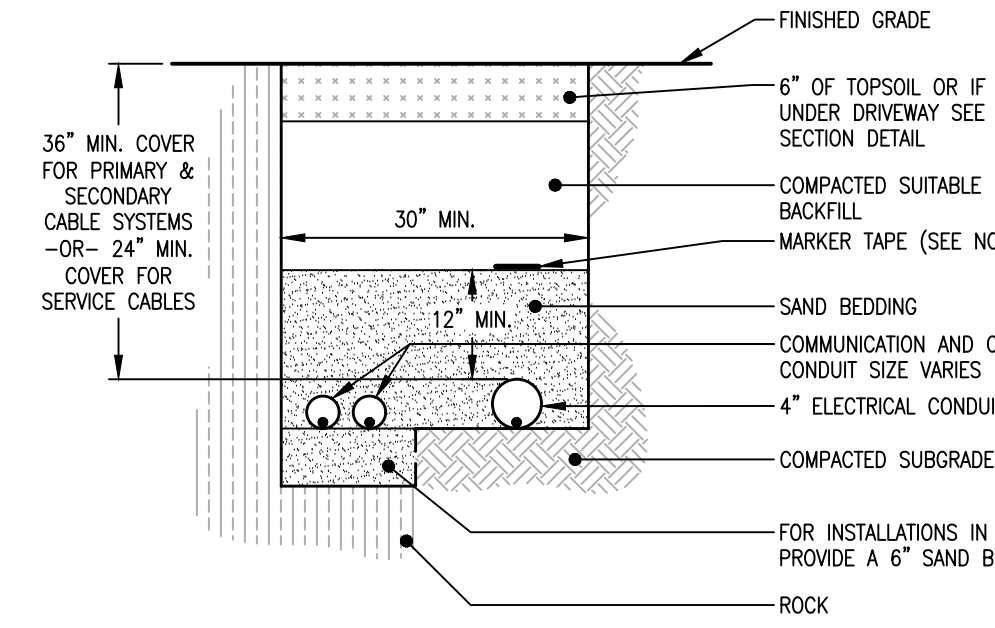
STRM 285L RECHARGER 150 CULTEC ROOF DRAIN RECHARGE SYSTEM DETAIL N.T.S.

- NOTES:
1. CALL "BEFORE YOU DIG" (1-800-922-4455).
  2. CONTRACTOR TO COORDINATE WITH EACH INDIVIDUAL UTILITY COMPANY AND THE DESIGN ENGINEER, ALL REQUIRED INSPECTIONS AND TAPPING PROCEDURES.
  3. MACHINE DIGGING SHALL STOP NOT LESS THAN 18" FROM VAULTS, FOUNDATIONS, EQUIPMENT, CABLES AND POLES. TRENCHING SHALL BE COMPLETED BY HAND THEREAFTER.
  4. A MINIMUM SEPARATION OF 30" SHALL BE MAINTAINED BETWEEN WATER SERVICE LINES AND ELECTRICAL CONDUIT.
  5. A MINIMUM SEPARATION OF 30" SHALL BE MAINTAINED BETWEEN WATER SERVICE LINES AND GAS SERVICE LINES. JOINT TRENCHING IS NOT PERMITTED FOR MAIN GAS LINES.



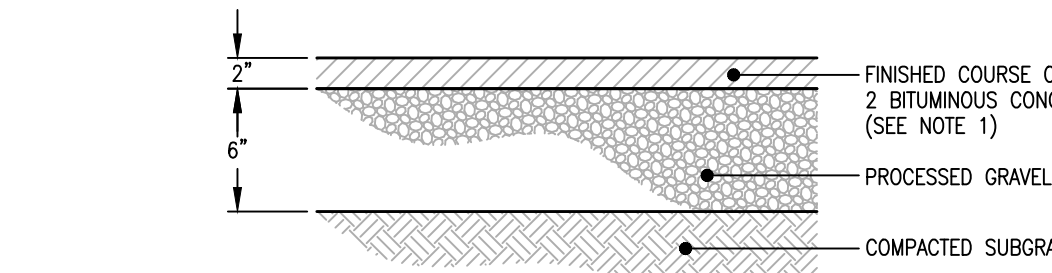
1 UTIL 015 WATER SERVICE TRENCHING DETAIL N.T.S.

- NOTES:
1. CALL "BEFORE YOU DIG" (1-800-922-4455).
  2. PROVIDE P.V.C. CONDUIT WITH NYLON PULL CORD AS REQUIRED FOR EACH INDIVIDUAL UTILITY LINE. CONTRACTOR TO COORDINATE WITH INDIVIDUAL UTILITY COMPANIES THE DIAMETER OF CONDUIT REQUIRED.
  3. CONTRACTOR TO COORDINATE WITH EACH INDIVIDUAL UTILITY COMPANY AND THE DESIGN ENGINEER, ALL REQUIRED INSPECTIONS.
  4. MACHINE DIGGING SHALL STOP NOT LESS THAN 18" FROM VAULTS, FOUNDATIONS, EQUIPMENT, CABLES AND POLES. TRENCHING SHALL BE COMPLETED BY HAND THEREAFTER.
  5. ALL ELEC. BURIED CONDUITS SHALL BE IDENTIFIED BY A RED PLASTIC FILM MARKER TAPE, AS SPEC. BY THE UTIL. CO. THE MARKER TAPE SHALL RUN DIRECTLY ABOVE THE ENTIRE LENGTH OF EACH CONDUIT SECTION AND SHALL HAVE MINIMUM VERTICAL SEPARATION OF 12".
  6. A MINIMUM SEPARATION OF 30" SHALL BE MAINTAINED BETWEEN ELECTRICAL CONDUIT AND WATER SERVICE LINES. SEPARATION BETWEEN ELECTRICAL CONDUIT AND WATER MAIN SHALL BE 36".
  7. A MINIMUM SEPARATION OF 30" SHALL BE MAINTAINED BETWEEN ELECTRICAL CONDUIT AND GAS SERVICE LINES. JOINT TRENCHING IS NOT PERMITTED FOR MAIN GAS LINES.



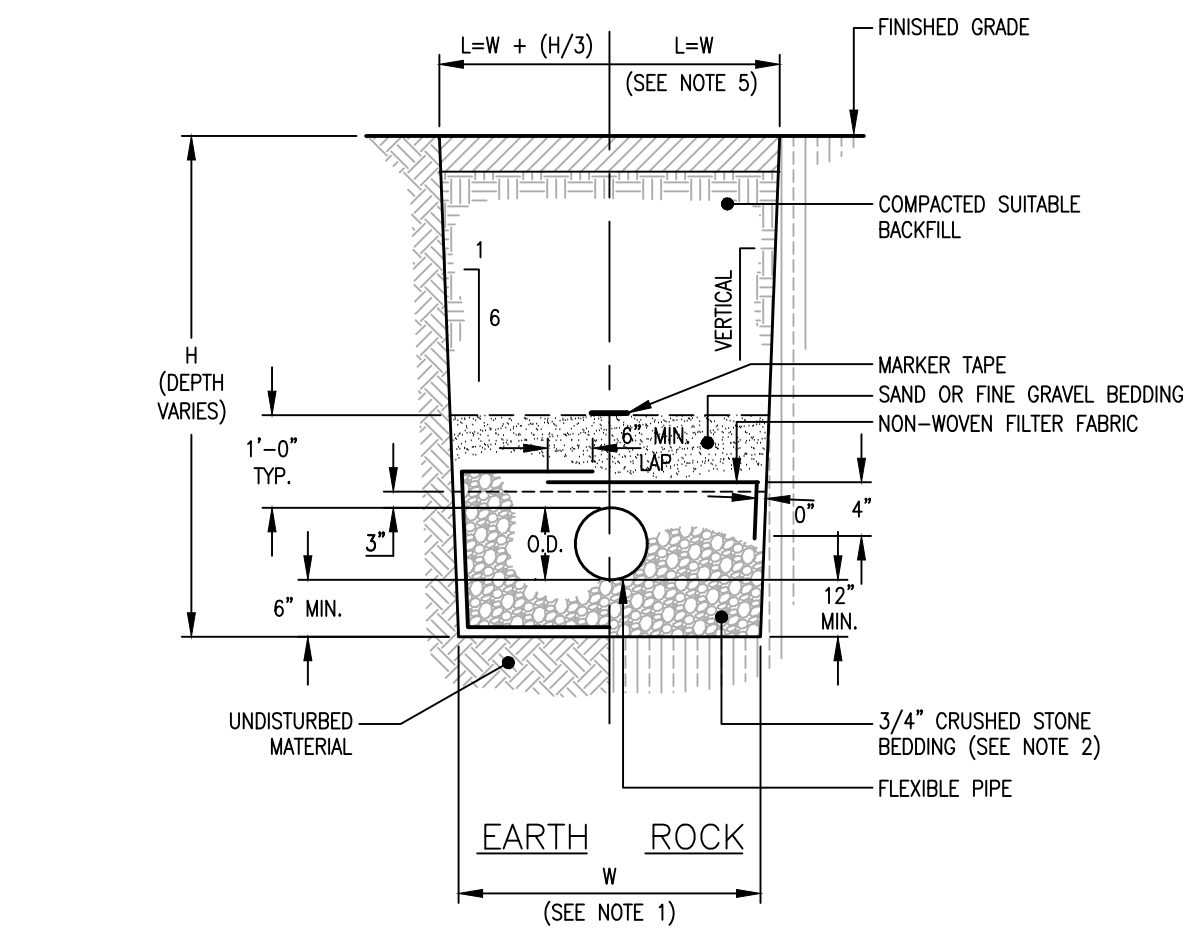
UTIL 014 UTILITY LINE TRENCHING DETAIL N.T.S.

- NOTES:
1. BITUMINOUS PAVEMENT AT OWNERS OPTION UNLESS OTHERWISE SPECIFIED ON THE PLANS.



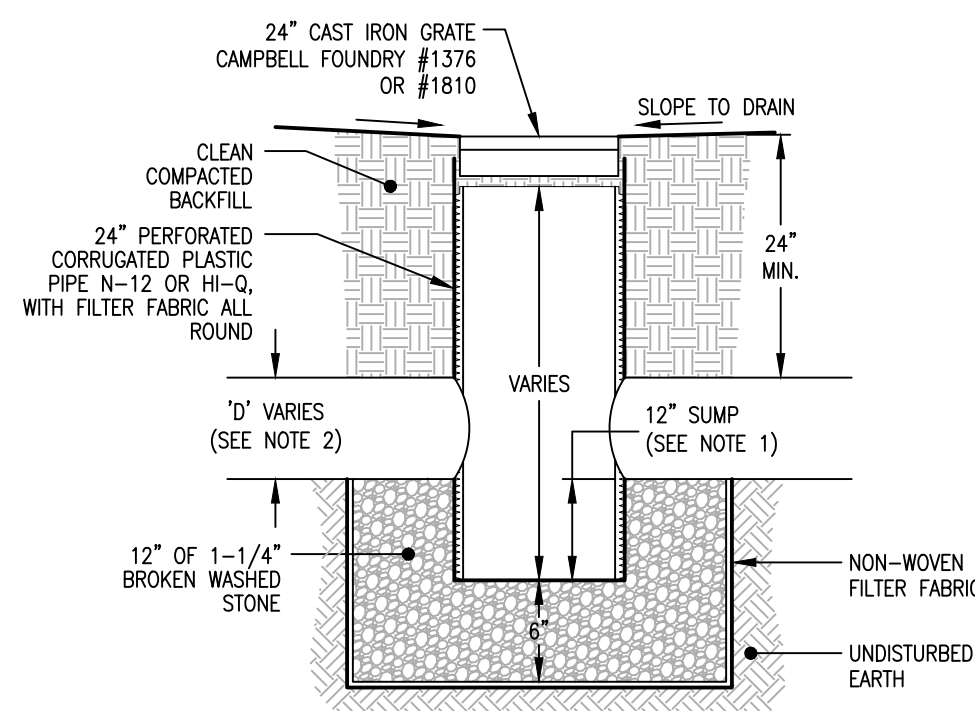
PV/VEH 013A TYPICAL DRIVEWAY PAVEMENT DETAIL N.T.S.

- NOTES:
1. FOR UNSHEETED TRENCH WHERE PIPE O.D. IS 6" OR LESS THAN, WIDTH (W) 2'-6", WHERE PIPE O.D. IS GREATER THAN 6" BUT LESS THAN OR EQUAL TO 36" THEN, W = O.D. + 2'-0", WHERE PIPE O.D. IS GREATER THAN 36" THEN, W = O.D. + 3'-0". PAYMENT FOR THE TRENCHING, BEDDING, FILTER FABRIC AND BACKFILL TO BE INCLUDED IN THE COST PER LINEAR FOOT OF THE PIPE.
  2. IF SUITABLE GRANULAR PIPE BEDDING MATERIAL IS AVAILABLE FROM ON SITE EXCAVATIONS, IT CAN BE UTILIZED PROVIDED IT CONFORMS WITH THE "STANDARD SPECIFICATIONS", AND IS APPROVED BY THE TOWN ENGINEER.
  3. TYPICAL FOR ALL FLEXIBLE PIPE MATERIALS I.E. C.P.P., P.V.C., POLYETHYLENE, F.R.P., AND A.B.S. TRUSS.
  4. SHEETING OR SHORING OF TRENCH WALLS, WHERE UNSUITABLE CONDITIONS EXIST, IS THE SOLE RESPONSIBILITY OF THE CONTRACTOR.
  5. FOR ROCK REMOVAL DEPTHS GREATER THAN 10', INCREASE WIDTH (W) BY 6".



STRM 017 CLASS 'B' TRENCH DETAIL N.T.S.

- NOTES:
1. WHERE CALLED FOR ON THE PLANS "NO SUMP", PROVIDE 4"-6" CONCRETE APRON TO PIPE INVERT.
  2. FOR 'D' LESS THAN OR EQUAL TO 8", PROVIDE A CLEAN CUT HOLE.



STRM 235E TYPICAL DRY WELL YARD DRAIN DETAIL N.T.S.

NO.	DATE	REVISION	DESCRIPTION	DRAWN BY	CHECKED BY
1	04-30-21		Revised per Agency comments	S.A.L.	M.E.L.
2	6-2-21		Added hydrant detail.	S.A.L.	M.E.L.

**DYMAR**

800 Main Street South · Southbury, CT 06488 · (803) 267-1066 · Fax (803) 267-1547  
ENGINEERING · PLANNING · SURVEYING · DEVELOPMENT SERVICES

DRAWINGS TO BE USED FOR LAND USE SUBMISSIONS ONLY  
NOT FOR CONSTRUCTION

CLIENT: Gregory M. & Robin P. Green

19 Little Pitch Road  
Litchfield, CT 06759

PROJECT: Two Lot Subdivision

19 Little Pitch Road  
Litchfield, CT 06759

TITLE: Site Details

DATE: 04/08/21

SCALE: 1"=40'

DESIGNED BY: S.A.L.

DRAWN BY: C.C.B.

CHECKED BY: M.E.L.

JOB NO: 01039

DRAWING NO: C-6

MARK E. LANCOR P.E. #12369

1 2